

Client Management & User Experience:

Managing workstations and
people in a smart fashion

Mac Admin Fundamentals • Mac Admins Conference at Penn State 2014

Now that you have workstations in the field, and users using them, it's important to understand how that's going to work for your organization.

Client Management

Users: Threat or Menace?

Client Management

- Keeps things where they belong
- Allows users to do some things without allowing them to do everything (or, if they do, putting it back where it belongs)
- Think of it as Change Management

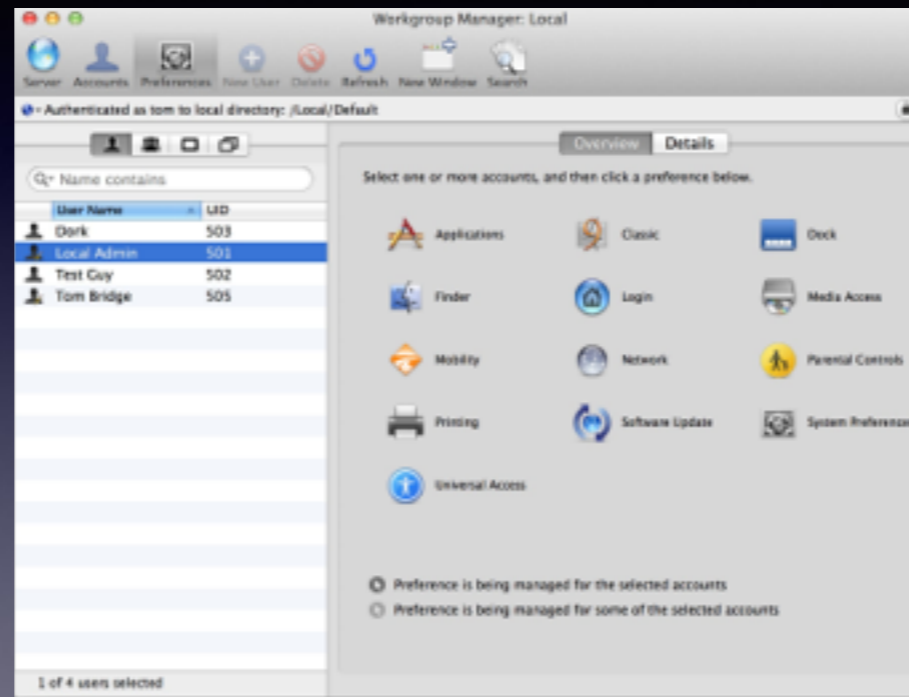
Every System is Different

- Munki - Management Via Package
- Casper/AbMan - Management Via Policy Agent
- Profile Manager/ARD - Management Via Profile
- ARD/Local MCX/OSXS - Management Via MCX

What's MCX?

- Managed Client for OS X
- Works by editing the Local Directory service that's in every Mac
- Built on plists
- Is largely deprecated
- But there's Tim Sutton's MCX to Profile Script

What's MCX



What's a Profile?

- Specially formatted XML plist
- Can (should?) be digitally signed and encrypted
- Controls preference settings for various parts of the OS and Application Settings
- Can be created by Profile Manager, iPhone Configuration Utility, Apple Configurator, Your Favorite Text Editor
- Can be deployed by ARD or Profile Manager/MDM

What's a Profile?

```
<?xml version="1.0" encoding="UTF-8"?>
<!DOCTYPE plist PUBLIC "-//Apple//DTD PLIST 1.0//EN"
"http://www.apple.com/DTDs/PropertyList-1.0.dtd">
<plist
version="1.0"><dict><key>PayloadIdentifier</key><string>com.apple.mdm.camera.navantigroup.
com.a684b3d0-e29e-0131-b67c-482a1457ec4d.alacarte</string><key>PayloadRemovalDisallowed</
key><false/><key>PayloadScope</key><string>User</string><key>PayloadType</key><string>
Configuration</string><key>PayloadUUID</key><string>a684b3d0-e29e-0131-b67c-482a1457ec4d</
string><key>PayloadOrganization</key><string>Navanti
Group</string><key>PayloadVersion</key><integer>1</integer><key>PayloadDisplayName</key><
string>Settings for Test
Guy</string><key>PayloadContent</key><array><dict><key>PayloadType</key><string>com.apple.
applicationaccess</string><key>PayloadVersion</key><integer>1</integer><key>
PayloadIdentifier</key><string>com.apple.mdm.camera.navantigroup.com.a684b3d0-e29e-0131-
b67c-482a1457ec4d.alacarte.restrictions.cc90aa40-e29e-0131-b67e-482a1457ec4d</string><key>
PayloadUUID</key><string>cc90aa40-e29e-0131-b67e-482a1457ec4d</string><key>PayloadEnabled<
/key><true/><key>PayloadDisplayName</key><string>Restrictions</string><key>
allowAppInstallation</key><true/><key>allowCamera</key><false/><key>allowVideoConferencing
</key><false/><key>allowExplicitContent</key><false/><key>allowScreenShot</key><false/><
key>allowYouTube</key><false/><key>allowiTunes</key><false/><key>allowVoiceDialing</key><
false/><key>allowMultiplayerGaming</key><false/><key>allowAddingGameCenterFriends</key><
false/><key>allowGlobalBackgroundFetchWhenRoaming</key><false/><key>forceEncryptedBackup</
key><false/><key>forceAirPlayOutgoingRequestsPairingPassword</key><false/><key>
```


AbMan/Casper

- Policy Agent-based
- Enforced actions based upon organization policy

Munki

- Not really meant for management
- Meant for deploying packages
- But packages can contain management

Useful Concepts in Management

- Once/Often/Always
- LaunchAgents/LaunchDaemons
- Profiles and their role in your ecosystem

User Experience

Or: Your Users Matter, Too

Good Guidelines For Happy Users

- Restrict only what you must
- Apply Postel's Law to Management
- There are exceptions to Rules 1 & 2
- Empower your users when possible
- Provided that they may take ownership of their environment.

Don't Mess With Users

- Be conservative in your update paths for bigger applications
- Try not to apply updates more than once a week if you can avoid it
- Be extra sensitive about user restart scenarios
- Your Users matter. Be gentle.